

MURSHIDABAD REGIONAL OFFICE
48, NAYA SADAK ROAD
PO- BERHAMPORE
DIST-MURSHIDABAD Pin-742101
Email ID- rmmsd@wbgb.co.in

TENDER NOTICE NO: 03 /2026

Date: 02.03.2026

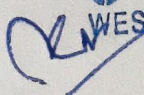
Notice inviting quotation/rate for wooden work for renovated premises of our Bazarpara Branch

Sealed quotations are invited for seeking rates of the wooden furniture as per sketched map attached herewith on or before **17.03.2026**.

The interested firms/ vendors can either submit their quotation in person to Regional Office Murshidabad (at Letter Receive Section) on any working day during office hours or may send by post so that the same reaches this office within the stipulated date. The quotations will be opened at R.O. on **18.03.2026 at 12:00 Noon**. The interested firms/ vendors may be present during opening of such quotations.

Terms and conditions

1. Quotation Rate will be considered on Lower Rate basis. Materials are to be supplied with a sharing basis of 60:40 between L1 and L2 bidder, provided L2 bidder agrees to supply at the lowest quoted rate. In case of dissent from L2 bidder, Bank's decision will be final.
2. Rates are to be quoted as per sketch attached herewith
3. Firms must have GST registration number.
4. After expiry of the above time schedule no quotation will be accepted.
5. Bank reserves the right to accept or cancel bid unilaterally without assigning any reason thereof, prior to placement of supply order/signing of contract thereby incurring any liability to the affected bidder(s) or any obligation to inform the affected bidder(s) for the cause of banks action and no further correspondence will be entertained regarding the matter.
6. Supply of the articles is to be made in due time and any deviation/delay may attract penalty from original bill.
7. Selected vendor will have to finish the stipulated work in due time. Otherwise they will be debarred from getting order for their other selected items and/or their further participation in the tender process may be suspended.
10. The rate/s will be inclusive of delivery charges & others but exclusive GST.
11. Materials will be rejected if any defect/deviation in quality from specification is found as given in tender process.

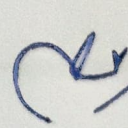

For and on behalf of
WEST BENGAL GRAMIN BANK

Regional Manager
Regional Manager
Murshidabad Regional Office

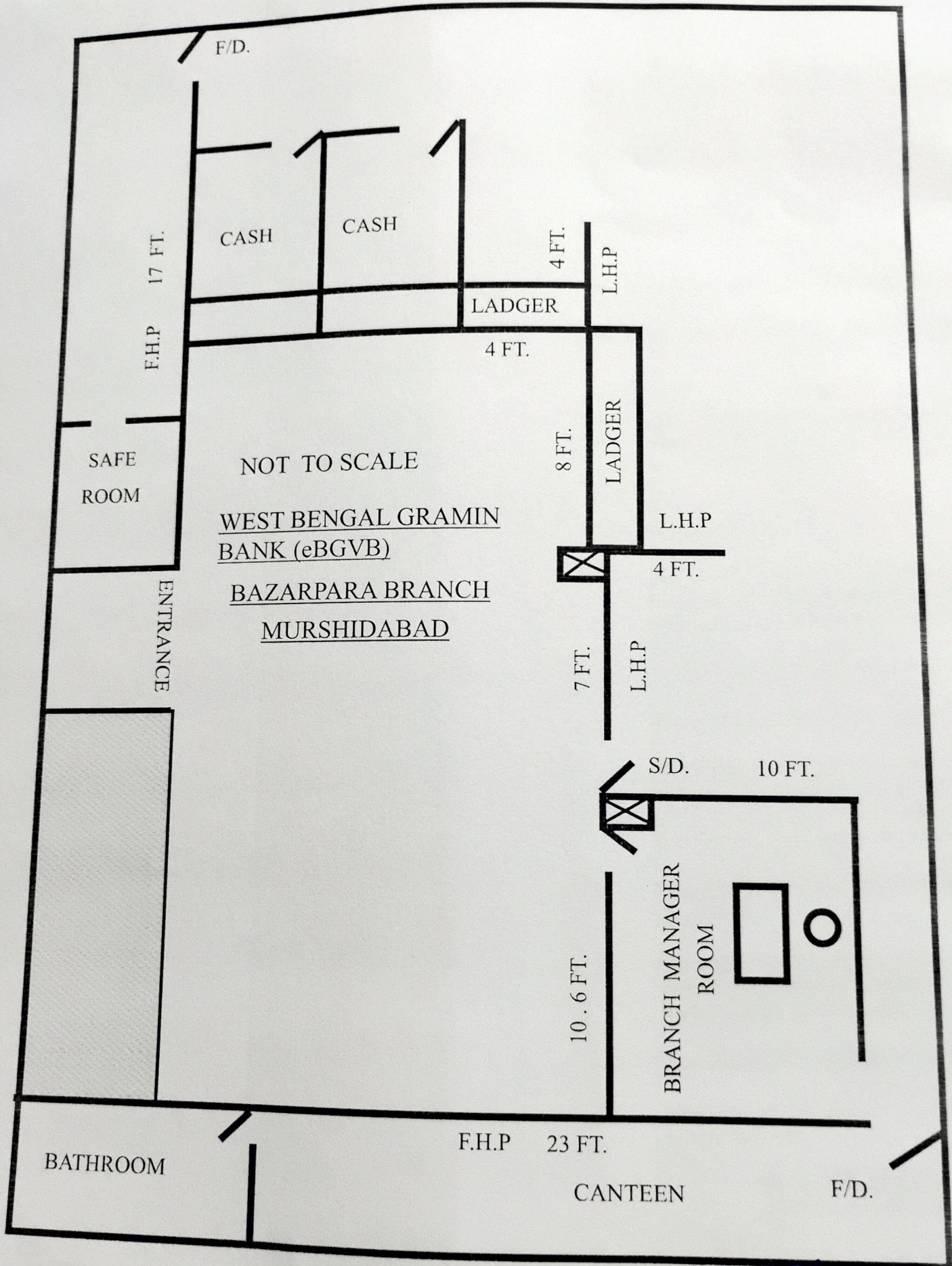
BUDGETARY ESTIMATE NEW WOODEN INTERIOR FURNITURE WORK AND FIXTURE WORK OF BAZARPARA BRANCH

S.L.	PARTICULAR	QUANTITY	RATE	AMOUNT
1	Cash cabin: Providing and fixation in position cash counter cash cabin providing and fixing in position cash counter station comprising of cash cabin work station, customer writing top finished with mirror granite slab of approved shade including surrounding piece fixed with chemical adhesive and BWR commercial board fitting and bank approved colour lamination with aluminium grill cover.	35sft.		
a	Supply of new hard wooden frame in side and out side cover with 6mm Bwr plyboard and lamination pasting finish work attached 12mm Mesh Co. etching glass with bank logo fitting work (public position) cash cage.	205 sft.		
b	Cash Counter: Wooden frame ground portion 3.5' H partition both side and back side BWR, commercial board fittings and lamination pasting attached under portion aluminium grill cover, attach door. Partition Height 7.5 Ft. and door measurement 6ft * 2ft including cash cabin back enclosure door Godrej lock(cash counter door) fitting fixing attached bank approved colour lamination pasting. 6ftHx2.5ftL) 2nos. door.	10 RFT.		
c	Cash counter desk: Supply of new cash counter desk 18 mm BWR commercial board structure right side 3 drawer attached with channel, computer keyboard tray attached with channel and drawer lamination pasting. Bank approved colour and public passage front side BWR. Commercial board cover attached bank approved colour lamination pasting inside desk measurement 2.5Ft H,9Ft width. 2.5Ft cash cabinet measurement and public, writing top 3.5Ft with hardware ornaments fittings best quality hinge, handle, best quality godrej lock fitting complete polish and in side primer and paint finish work.	25 sft.		
d	Supply of new granite fittings for cash counter top and ledger counter top side both side molding finish.	12 RFT		
2	Work Station(ledger counter): Supply of new ledger counter BWR commercial board structure one drawer and one hinge door, computer keyboard tray attached with channel, cover desk top and face attached with side partition bank approved colour lamination pasting with best quality hinge handle best quality lock fittings inside synthetic paint fitting fixing complete with polish. Ledger counter measurement 2.5FH, 8Ft. 2.5Ft.	50 sft.		
3	Low height partition:- Providing & fixing hard wood section without sap & joint at maximum 2ft c/c both horizontally & vertically treated with pentaphine pale from STP as anti termite & fire retardant. To be fixed screwed to the floor with MS cleats. The framework will be clad with 6 mm thick BWR plywood both sides & finished with thick approved shed laminate as per design approved. Low height partition for branch area made of 2"x2" size quality seasoned wooden frame of partition height 4Ft. partition upper side etching glass with bank logo attached with column fitting work (public position) both sides covered by 6mm ISI Brand partition topside 18mm Bwr plyboard fitting for 4" platform finished with thick approved shed laminate as per design approved.	226 sft.		
4	Branch Manager Cabin Full height partition:- Providing & fixing hard wood section without sap & joint at maximum 2ft c/c both horizontally & vertically treated with pentaphine pale from STP as anti termite & fire retardant. To be fixed screwed to the floor with MS cleats. The framework will be clad with 6 mm thick BWR plywood both sides & finished with thick approved shed laminate as per design approved. Full Height Partition for Branch Manager made of 2"x2" size quality seasoned wooden frame of partition height 4Ft. partition upper portion etching glass fitting attached with column fitting work and top portion both sides covered by 6mm ISI Brand 1nos. full height door with frame fitting attached with hinge, godrej mortise lock and godrej door closer, door stopper also.	9 sft.		
5	Low height Swing Door:- Providing & fixing solid core flash door of 35mm. thick finish with approved colour laminate. Solid flash door finished with prescribed shades of laminates as per design. attached with hinge and tower bolt.	8 sft.		
6	Supply of new 12mm etching glass with bank logo attached with column fitting work (public position) for ledger counter top side.	120 sft.		
7	Branch area column panelling work:- Providing & fixing hard wood framework will be clad with 12 mm thick BWR plywood finished with thick approved shed laminate as per design approved. And bit fitting with polish finish work.	1 nos.		
8	Notice Board:- Supply of 1nos. Pin up Notice Board make with 12mm plyboard for branch cover with bank approve color in side foam filling.	L.S.		
9	Old Furniture setup Dismantel Work:- (Cash Counter 2nos., ledger work station setup, Low heigh partition and swing door setup etc.) dismantling and removing work with labour charges.	1 nos.		
10	MAIN ENTRANCE DOOR WITH FIXED PARTLY GLAZING PARTITION FOR BRANCH: Providing and fixing in position of door shutter, fixed attached with aluminium bar partly made of 5mm thick float glass and A.C.P. partition board as per design. The rates shall include cost of door frame, hardware, bolt, locks, G channel bar, handles etc. The rates shall include vinyl sticker pasting work the Bank's logo and emblem on the glass in the size and design as prescribed by the Bank.	335 sft.		
11	Full height Partition and Full Height Door:- Providing & fixing solid Full height Partition hard wood section without sap & joint at maximum 2ft c/c both horizontally & vertically treated with pentaphine pale from STP as anti termite & fire retardant. To be fixed screwed to the floor with MS cleats. The framework will be clad with 6 mm thick BWR plywood both sides & finished with thick approved shed laminate as per design approved partition height 10feet and 2 nos. flash door of 35mm. thick attached with frame and head finish with both side approved colour laminate. attached with hinge and Godrej Door Closer and 1nos. Godrej Mortise Lock. 1 nos. hasbolt	40 sft.		
	Old Bathroom uperside partiton work: Providing & fixing hard wood section without sap & joint at maximum 2ft c/c both horizontally & vertically To be fixed screwed to the ceiling with MS cleats. The framework will be clad with 6 mm thick BWR plywood both sides & finished with thick approved shed laminate as per design approved. Bathroom partly wall dimalental work for new door fitting aluminium door fitting work. With labour charges	1 nos.		

For and on behalf of
WEST BENGAL GRAMIN BANK



Regional Manager
Murshidabad Regional Office



For and on behalf of
WEST BENGAL GRAMIN BANK

[Signature]
 Regional Manager
 Murshidabad Regional Office