

MURSHIDABAD REGIONAL OFFICE  
48, NAYA SADAK ROAD  
PO- BERHAMPORE  
DIST-MURSHIDABAD Pin-742101  
Email ID- [rmmsd@wbgb.co.in](mailto:rmmsd@wbgb.co.in)

TENDER NOTICE NO: 10 /2025

Date: 05.01.2026

**Notice inviting quotation/rate for furniture work for new premises of our Bharatpur and Mirzapur Branches under Murshidabad Region.**

Sealed quotations are invited for seeking rates of the wooden furniture as per sketched map and work schedule attached herewith on or before **20.01.2026**.

The interested firms/ vendors can either submit their quotation in person to Regional Office Murshidabad (at Letter Receive Section) on any working day during office hours or may send by post so that the same reaches this office within the stipulated date. The quotations will be opened at R.O. on **21.01.2026 at 12:00 Noon**. The interested firms/ vendors may be present during opening of such quotations.

**Terms and conditions:**

15. Quotation Rate will be considered on Lower Rate basis. Materials are to be supplied with a sharing basis of 60:40 between L1 and L2 bidder, provided L2 bidder agrees to supply at the lowest quoted rate. In case of dissent from L2 bidder, Bank's decision will be final.
16. Rates are to be quoted as per work schedule attached herewith.
17. Firms must have GST registration number.
18. After expiry of the above time schedule no quotation will be accepted.
19. Bank reserves the right to accept or cancel bid unilaterally without assigning any reason thereof, prior to placement of supply order/signing of contract thereby incurring any liability to the affected bidder(s) or any obligation to inform the affected bidder(s) for the cause of banks action and no further correspondence will be entertained regarding the matter.
20. All stipulated work is to be done in due time and any deviation/delay may attract penalty from original bill.
21. Selected vendor will have to finish the stipulated work in due time. Otherwise they will be debarred from getting order for their other selected items and/or their further participation in the tender process may be suspended.
10. The rate/s will be Inclusive of delivery charges & others but exclusive GST.
11. Materials will be rejected if any defect/deviation in quality from specification is found as given in tender process.

*For and on behalf of*

 WEST BENGAL GRAMIN BANK

**Regional Manager,**

**Regional Manager  
Murshidabad Regional Office**

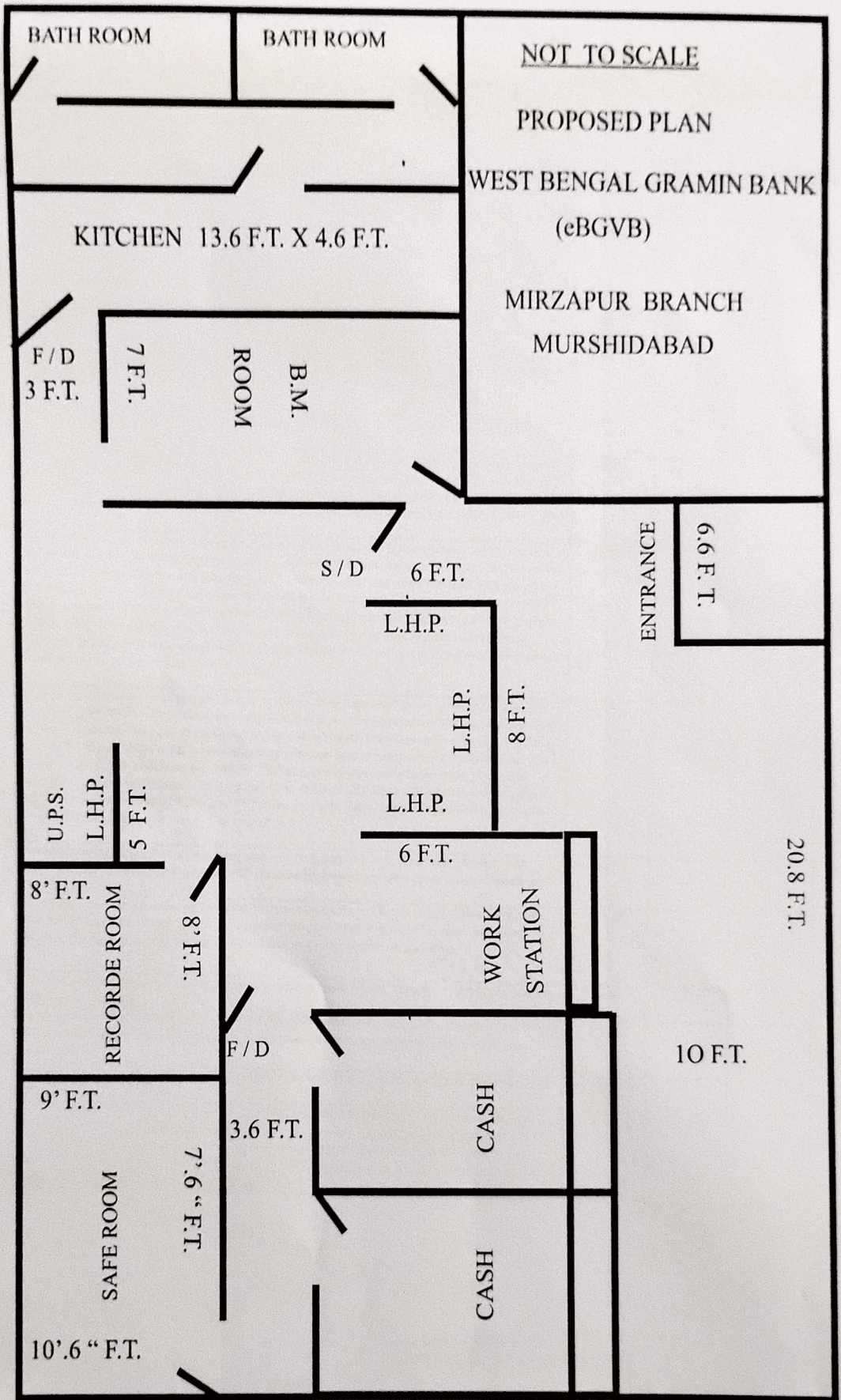
**BUDGETARY ESTIMATE NEW WOODEN INTERIOR FURNITURE WORK AND  
FIXTURE WORK AT NEW PREMISES OF MIRZAPUR BRANCH**

S.L.	PARTICULAR	QUANTITY	RATE	AMOUNT
1	<b>Cash cabin:</b> Providing and fixation in position cash counter cash cabin providing and fixing in position cash counter station comprising of cash cabin work station, customer writing top finished with mirror granite slab of approved shade including mounding piece, fixed with chemical adhesive and BWR commercial board fitting and bank approved colour lamination with aluminium grill cover.			
a	Supply of new hard wooden frame in side and out side cover with 6mm Bwr plyboard and lamination pasting finish work attached 12mm Modi Co. etching glass with bank logo fitting work ( public position) cash cage.	35sft.		
b	<b>Cash Cover:</b> Wooden frame ground portion 3.5' H partition both side and back side 6mm BWR commercial board fittings and lamination pasting attached under portion aluminium grill cover, attach door. Partition Height 7.5 Ft. and door measurement 6ft * 2ft including cash cabin back enclosure door Godrej lock( cash counter door) fitting fixing attached bank approved colour lamination pasting. 6 ft(h)x2'ft(l) 2nos. door.	205 sft.		
c	<b>Cash counter desk :</b> Supply of new cash counter desk 18 mm BWR commercial board structure right side 3 drawer attached with chanel, computer keyboard tray attached with chanel and drawer lamination pasting. Bank approved colour and public passage front side BWR. Commercial board cover attached bank approved colour lamination pasting inside desk measurement 2.5ft H,9ft 6inch, 2.5ft,cash cabinet measurement and public, writing top 3.5ft with hardware ornaments fittings best quality hinge, handle, best quality godrej lock fitting complete polish and In side praimer and paint finish work.	10 RFT.		
d	Supply of new granite fittings for cash counter top and ledger counter top side both side molding finish.	30sft.		
2	<b>Work Station(ledger counter):</b> Supply of new ledger counter 18mm BWR commercial board structure one drawer and one hinge door, computer keyboard tray attached with chanel, cover desk top and face bank approved colour lamination pasting with best quality hinge handle best quality lock fittings inside synthetic paint fitting fixing complete with polish Ledger counter measurement 2.5FH, 10ft, 2.5ft.	10 RFT.		
3	<b>Branch Manager Cabin Full height partition:-</b> Providing & fixing hard wood section without sap & joint at maximum 2'ft c/c both horizontally & vertically treated with pentaphine pale from STP as anti termite & fire retardant. To be fixed screwed to the floor & ceiling with MS cleats. The framework will be clad with 6 mm thick BWR plywood both sides & finished with thick approved shed laminate as per design approved. Low Height Partition for Branch Manager made of 2"x2" size quality seasoned wooden frame of partition height 7.1"ft. partition uper side etching glass with bank logo attached with column fitting work ( public position) both sides covered by6mm ISI Brand Resin Bonded, Termit Resistance and Water Resistance Board.middle portion 6mm glass fitting with bit polish finish work. 1nos. full height door attached with godrej door closer and godrej mortice lock.	203 sft.		
4	<b>Low height partition:-</b> Providing & fixing hard wood section without sap & joint at maximum 2'ft c/c both horizontally & vertically treated with pentaphine pale from STP as anti termite & fire retardant. To be fixed screwed to the floor & ceiling with MS cleats. The framework will be clad with 6 mm thick BWR plywood both sides & finished with thick approved shed laminate as per design approved. Low height partition for branch area made of 2"x2" size quality seasoned wooden frame of partition height 4ft. partition uper side Cloumn attached 12mm etching glass with bank logo attached with column fitting work ( public position) both sides covered by6mm ISI Brand Resin Bonded, Termit Resistance and Water Resistance Board, partition topside 18mm Bwr plyboard fitting for 4" platform finished with thick approved shed laminate as per design approved.	84 sft.		
5	<b>Low height Swing Door:-</b> Providing & fixing solid core flash door of 35mm. thick finish with approved colour laminate. Solid flash door finished with prescribed shades of laminates as per design.attached with hinge and tower bolt.	9 sft.		
6	Supply of new 12mm etching glass with bank logo attached with column fitting work ( public position) for ledger counter top side.	10 sft.		
7	Branch area column panelling work:- Providing & fixing hard wood framework will be clad with 12 mm thick BWR plywood finished with thick approved shed laminate as per design approved. And bit fitting with polish finish work. approved. Low height partition for	80 sft.		
8	<b>Notice Board:-</b> Supply of 1nos. Pin up Notice Board make with 12mm plyboard for branch cover with bank approve color in side foam filling. Size 3' x 2'.6"	1 nos.		
9	Cash counter back side portion full height partition with full height Door attached with godrej door closer and adjustable Latch,Handel.	30 sft.		
10	U.P.S. unit cover low height partition	20 sft.		
11	<b>MAIN ENTRANCE DOOR WITH PARTLY GLAZING PARTITION FOR BRANCH:</b> Providing and fixing in position of door shutter, fixed attached with aluminium bar partly made of 5mm thick float glass and A.C.P.partition board as per design. The rates shall include cost of door frame, hardware, bolt, locks, Godrej door closer, handles etc. 6'.6" x 7" The rates shall include vinyl sticker pasting work the Bank's logo and emblem on the glass in the size and design as prescribed by the Bank.	1nos.		
12	Branch area column panelling work:- Providing & fixing hard wood framework will be clad with 12 mm thick BWR plywood finished with thick approved shed laminate as per design approved. And bit fitting with polish finish work.	179 sft.		

For and on behalf of  
WEST BENGAL GRAMIN BANK

Regional Manager  
Murshidabad Regional Office

*(Signature)*



32 F.T. and on behalf of  
 WEST BENGAL GRAMIN BANK

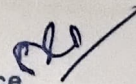
Regional Manager  
 Murshidabad Regional Office

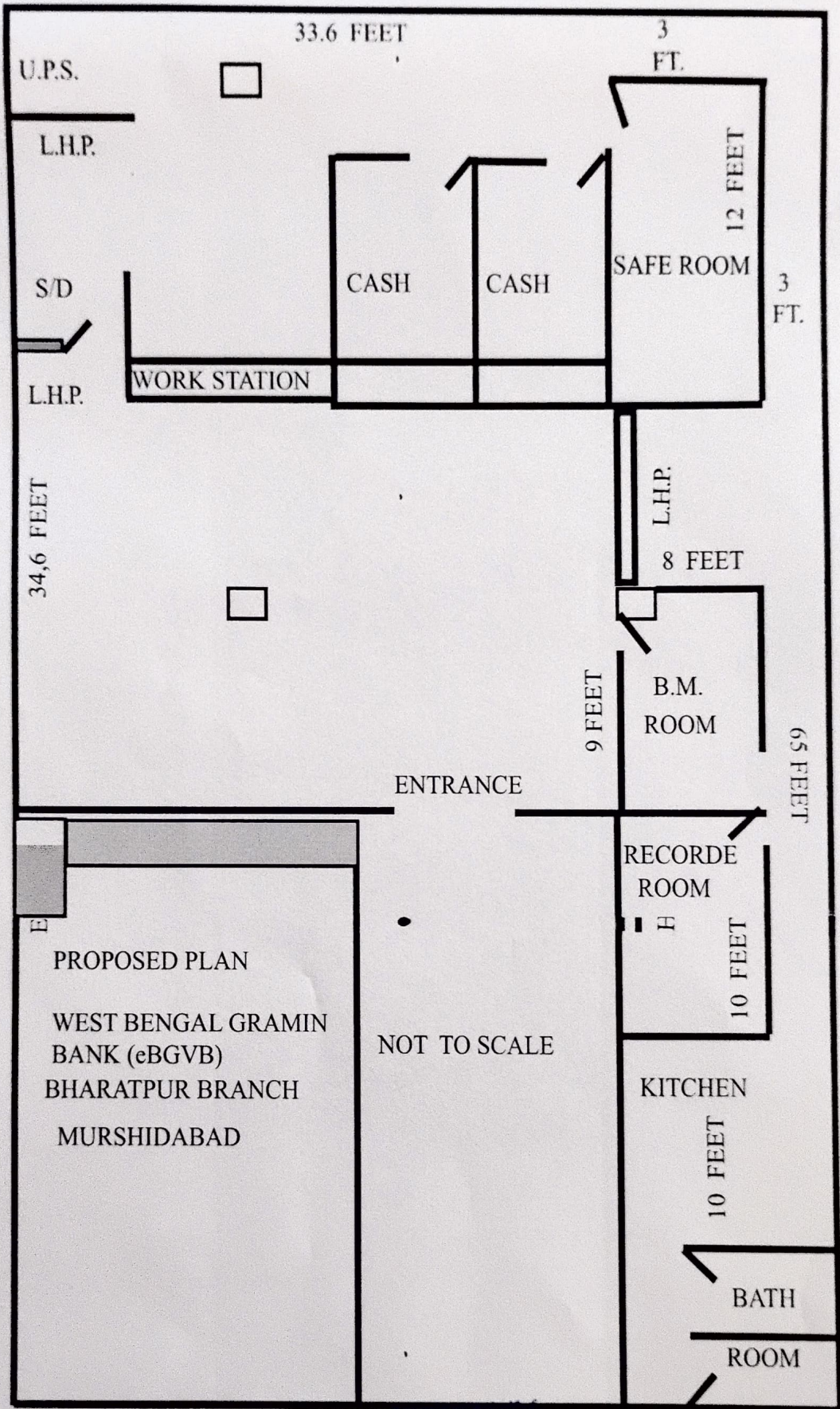
**BUDGETARY ESTIMATE NEW WOODEN INTERIOR FURNITURE WORK AND FIXTURE WORK AT NEW PREMISES OF BHARATPUR BRANCH**

S.L.	PARTICULAR	QUANTITY	RATE	AMOUNT
1	Cash cabin: Providing and fixation in position cash counter cash cabin providing and fixing in position cash counter station comprising of cash cabin work station, customer writing top finished with mirror granite slab of approved shade including moulding piece, fixed with chemical adhesive and BWR commercial board fitting and bank approved colour lamination with aluminium grill cover.			
a	Supply of new hard wooden frame in side and out side cover with 6mm Bwr plyboard and lamination pasting finish work attached 12mm Modi Co. etching glass with bank logo fitting work ( public position)	35sft.		
b	Cash Cover: Wooden frame ground portion 3.5' H partition both side and back side BWR, commercial board fittings and lamination pasting attached under portion aluminium grill cover, attach door. Partition Height 7.5 Ft. and door measurement 6ft * 2ft including cash cabin back enclosure door Godrej lock( cash counter door) fitting fixing attached bank approved colour lamination pasting. 6'ft(h)x2'ft(L) 2nos. door.	205 sft.		
c	Cash counter desk : Supply of new cash counter desk 18 mm BWR commercial board structure right side 3 drawer attached with channel, computer keyboard tray attached with channel and drawer lamination pasting. Bank approved colour and public passage front side BWR. Commercial board cover attached bank approved colour lamination pasting inside desk measurement 2.5Ft H,9Ft 6inch, 2.5Ft,cash cabinet measurement and public, writing top 3.5Ft with hardware ornaments fittings best quality hinge, handle, best quality godrej lock fitting complete polish and in side praimer and paint finish work.	10 RFT.		
d	Supply of new granite fittings for cash counter top and ledger counter top side both side molding finish.	25 sft.		
2	Work Station(ledger counter):- Supply of new ledger counter BWR commercial board structure one drawer and one hinge door, computer keyboard tray attached with channel ,cover desk top and face attached with side partition bank approved colour lamination pasting with best quality hinge handle best quality lock fittings inside synthetic paint fitting fixing complete with polish. Ledger counter measurement 2.5FtH, 8Ft, 2.5Ft.	10 RFT		
3	Low height partition:- Providing & fixing hard wood section without sap & joint at maximum 2'ft c/c both horizontally & vertically treated with pentaphine pale from STP as anti termite & fire retardant. To be fixed screwed to the floor & ceiling with MS cleats. The framework will be clad with 6 mm thick BWR plywood both sides & finished with thick approved shed laminate as per design approved. Low height partition for branch area made of 2"x2" size quality seasoned wooden frame of partition height 4Ft. partition upper side etching glass with bank logo attached with column fitting work ( public position) both sides covered by6mm ISI Brand partition topside 18mm Bwr plyboard fitting for 4" platfqrn finished with thick approved shed laminate as per design approved.	51.5 sft.		
4	Branch Manager Cabin Full height partition:- Providing & fixing hard wood section without sap & joint at maximum 2'ft c/c both horizontally & vertically treated with pentaphine pale from STP as anti termite & fire retardant. To be fixed screwed to the floor & ceiling with MS cleats. The framework will be clad with 6 mm thick BWR plywood both sides & finished with thick approved shed laminate as per design approved. Low Height Partition for Branch Manager made of 2"x2" size quality seasoned wooden frame of partition height 4Ft. partition upper portion etching glass fitting attached with column fitting work and top portion both sides covered by6mm ISI Brand 1nos. full height door with frame fitting attached with hinge, godrej mortise lock and godrej door closer, door stopper also.	195 sft.		
5	Low height Swing Door:- Providing & fixing solid core flash door of 35mm. thick finish with approved colour laminate. Solid flash door finished with prescribed shades of laminates as per design.attached with hinge and tower bolt.	9 sft.		
6	Full Height Door and upper side partition work:- Providing & fixin Full height 1 nos. flash door of 35mm. thick attached with frame and upper head block with partition finish with both side approved colour laminate. attached with hinge and Godrej Door Closer and tower hasbolt handle fitting.	31.5 sft.		
7	Supply of new 12mm etching glass with bank logo attached with column fitting work ( public position) for ledger counter top side.	8 sft.		
8	Branch area column panelling work:- Providing & fixing hard wood framework will be clad with 12 mm thick BWR plywood finished with thick approved shed laminate as per design approved. And bit fitting with polish finish work.	171 sft.		
9	Notice Board:- Supply of 1nos. Pin up Notice Board make with 12mm plyboard for branch cover with bank approve color in side foam filling.	1 nos.		
10	MAIN ENTRANCE DOOR WITH FIXED PARTLY GLAZING PARTITION FOR BRANCH: Providing and fixing in position of door shutter, fixed attached with aluminium bar partly made of 5mm thick float glass and A.C.P.partition board as per design. The rates shall include cost of door frame, hardware, bolt, locks, G channel bar, handles etc. The rates shall include vinyl sticker pasting work the Bank's logo and emblem on the glass in the size and design as prescribed by the Bank.	1 nos.		

**For and on behalf of  
WEST BENGAL GRAMIN BANK**

**Regional Manager  
Murshidabad Regional Office**





For and on behalf of  
WEST BENGAL GRAMIN BANK

Regional Manager  
Murshidabad Regional Office