

MURSHIDABAD REGIONAL OFFICE
48, NAYA SADAK ROAD
PO- BERHAMPORE
DIST-MURSHIDABAD Pin-742101
Email ID- rmmsd@wbgb.co.in

TENDER NOTICE NO: 05 /2026

Date: 30.04.2026

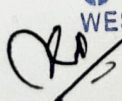
Notice inviting quotation/rate for wooden work for renovated premises of our Kalukhali Branch

Sealed quotations are invited for seeking rates of the wooden furniture as per sketched map attached herewith on or before **14.05.2026**.

The interested firms/ vendors can either submit their quotation in person to Regional Office Murshidabad (at Letter Receive Section) on any working day during office hours or may send by post so that the same reaches this office within the stipulated date. The quotations will be opened at R.O. on **15.05.2026 at 12:00 Noon**. The interested firms/ vendors may be present during opening of such quotations.

Terms and conditions

1. Quotation Rate will be considered on Lower Rate basis. Materials are to be supplied with a sharing basis of 60:40 between L1 and L2 bidder, provided L2 bidder agrees to supply at the lowest quoted rate. In case of dissent from L2 bidder, Bank's decision will be final.
2. Rates are to be quoted as per sketch attached herewith
3. Firms must have GST registration number.
4. After expiry of the above time schedule no quotation will be accepted.
5. Bank reserves the right to accept or cancel bid unilaterally without assigning any reason thereof, prior to placement of supply order/signing of contract thereby incurring any liability to the affected bidder(s) or any obligation to inform the affected bidder(s) for the cause of banks action and no further correspondence will be entertained regarding the matter.
6. Supply of the articles is to be made in due time and any deviation/delay may attract penalty from original bill.
7. Selected vendor will have to finish the stipulated work in due time. Otherwise they will be debarred from getting order for their other selected items and/or their further participation in the tender process may be suspended.
10. The rate/s will be inclusive of delivery charges & others but exclusive GST.
11. Materials will be rejected if any defect/deviation in quality from specification is found as given in tender process.


For and on behalf of
WEST BENGAL GRAMIN BANK

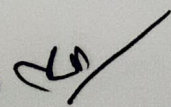
Regional Manager
Murshidabad Regional Office

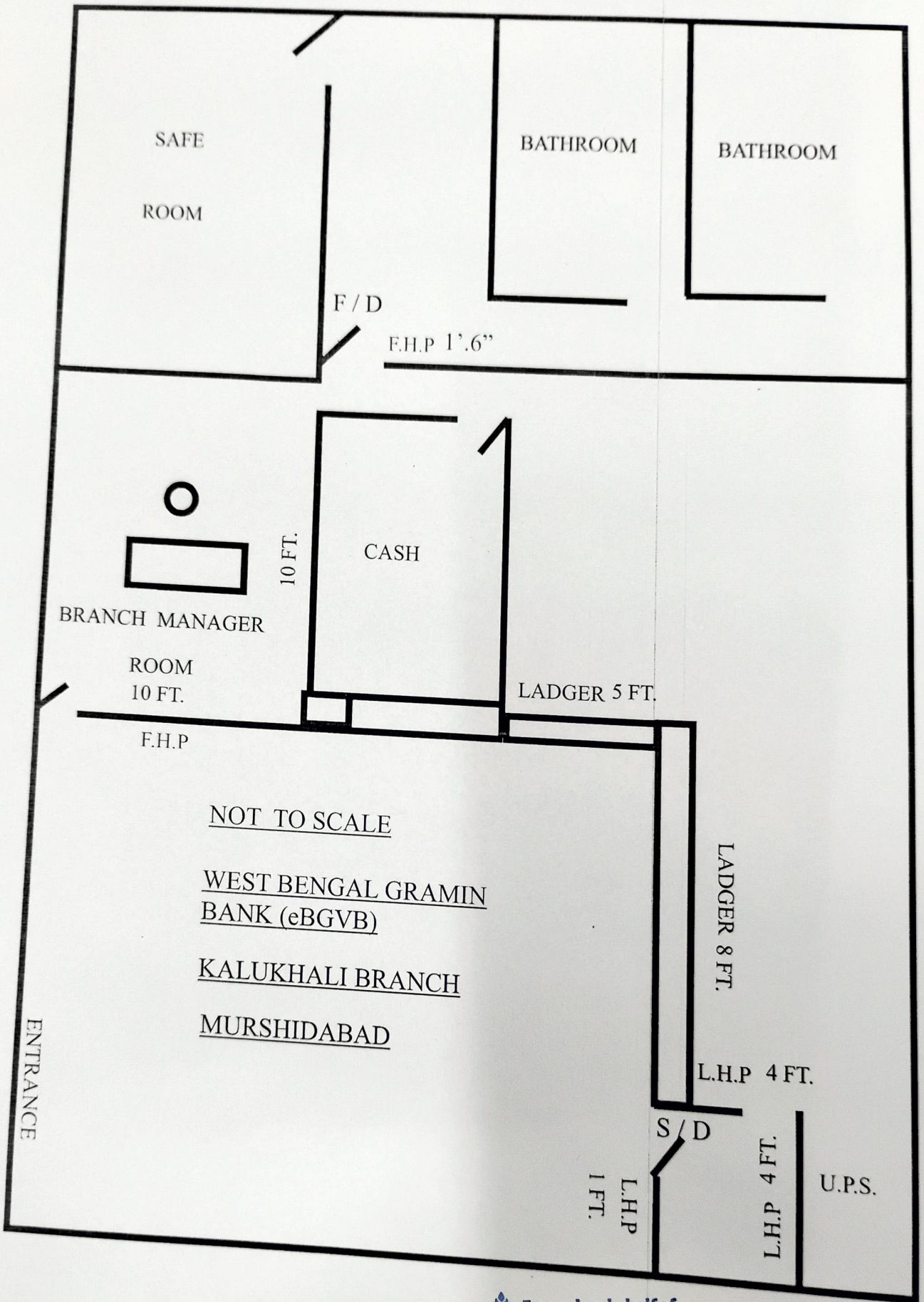
BUDGETARY ESTIMATE - NEW WOODEN INTERIOR FURNITURE WORK AND FIXTURE WORK AT NEW PREMISES OF KALUKHALI BRANCH

S.L.	PARTICULAR	QUANTITY	RATE	AMOUNT
1	Cash cabin: Providing and fixation in position cash counter cash cabin providing and fixing in position cash counter station comprising of cash cabin work station, customer writing top finished with mirror granite slab of approved shade including mounding piece, fixed with chemical adhesive and BWR commercial board fitting and bank approved colour lamination with aluminium grill cover.			
a	Supply of new hard wooden frame in side and out side cover with 6mm Bwr plyboard and lamination pasting finish work attached 12mm Modi Co. etching glass with bank logo fitting work (public position) cash cage.	20 sft.		
b	Cash Cover: Wooden frame ground portion 3.5' H partition both side and back side BWR, commercial board fittings and lamination pasting attached under portion aluminium grill cover, attach door. Partition Height 7.2 Ft. and door measurement 6ft * 2ft including cash cabin back enclosure door Godrej lock(cash counter door) fitting fixing attached bank approved colour lamination pasting. 6'(h)x2'(L) 1nos. door.	122 sft.		
c	Cash counter desk : Supply of new cash counter desk 18 mm DWR commercial board structure right side 3 drawer attached with chanel, computer keyboard tray attached with chanel and drawer lamination pasting. Bank approved colour and public passage front side BWR. Commercial board cover attached bank approved colour lamination pasting inside desk measurement 2.5Ft H,9Ft 6inch, 2.5Ft,cash cabinet measurement and public, writing top 3.5Ft with hardware ornaments fittings best quality hinge, handle, best quality godrej lock fitting complete polish and in side praimer and paint finish work.	5 RFT.		
d	Supply of new granite fittings for cash counter top and ledger counter top side both side molding finish.	42sft.		
2	Work Station(ledger counter): Supply of new ledger counter BWR commercial board structure one drawer and one hinge door, computer keyboard tray attached with chanel, cover desk top and face bank approved colour lamination pasting with best quality hinge handle best quality lock fittings inside synthetic paint fitting fixing complete with polish. Ledger counter measurement 2.5FtH, 10Ft, 2.5Ft.	13 RFT		
3	Low height partition:- Providing & fixing hard wood section without sap & joint at maximum 2'ft c/c both horizontally & vertically treated with pentaphine pale from STP as anti termite & fire retardant. To be fixed screwed to the floor & ceiling with MS cleats. The framework will be clad with 6 mm thick BWR plywood both sides & finished with thick approved shed laminate as per design approved. Low height partition for branch area made of 2"x2" size quality seasoned wooden frame of partition height 4Ft. partition upper side etching glass with bank logo attached with column fitting work (public position) both sides covered by6mm ISI Brand shed laminate as per design approved.	36 sft		
4	Branch Manager Cabin Full height partition:- Providing & fixing hard wood section without sap & joint at maximum 2'ft c/c both horizontally & vertically treated with pentaphine pale from STP as anti termite & fire retardant. To be fixed screwed to the floor & ceiling with MS cleats. The framework will be clad with 6 mm thick BWR plywood both sides & finished with thick approved shed laminate as per design approved. Low Height Partition for Branch Manager made of 2"x2" size quality seasoned wooden frame of partition height 4Ft. partition upper portion etching glass fitting attached with column fitting work and top portion both sides covered by6mm ISI Brand Resin Bonded, Termit Resistance and Water Resistance Board. 1nos. full height door with frame fitting attached with hinge, godrej mortise lock and door closer, door stopper also.	145 sft.		
5	BRANCH MANAGER SECRETARIAT TABLE: Supply of new 18 mm BWR commercial board structure and front side ply board fitting, right side 3 nos. drawer attached with chanel, left side 1nos.drawer and 1 nos. palla, computer keyboard tray attached with chanel and drawer lamination pasting. Bank approved colour and public passage front side BWR. Commercial board cover attached bank approved colour lamination pasting inside desk measurement 5' x 3' Feet, hardware ornaments fittings best quality hinge, handle, best quality godrej lock fitting complete and in side praimer and paint finish work.	1 NOS.		
6	OFFICERS TABLE: Supply of new 18 mm BWR commercial board structure and front side ply board fitting, right side 1 nos. drawer attached with chanel, and 1 nos. palla, computer keyboard tray attached with chanel and drawer lamination pasting. Bank approved colour and public passage front side BWR. Commercial board cover attached bank approved colour lamination pasting inside desk measurement 4' x 3' Feet, hardware ornaments fittings best quality hinge, handle, best quality godrej lock fitting complete and in side praimer and paint finish work.	1 NOS.		
7	BRANCH MANAGER TABLE SIDE CABINET: Supply of new 18 mm BWR commercial board structure and front side ply board fitting, front side open and 1 nos self lamination pasting. Bank approved colour and public passage front side BWR. Commercial board cover attached bank approved colour lamination pasting inside desk measurement 5' x 1'.6" Feet, height 2'.6" hardware ornaments fittings best quality hinge, handle, best quality godrej lock fitting complete and in side praimer and paint finish work.	1 NOS.		
8	Low height Swing Door:- Providing & fixing solid core flash door of 35mm. thick finish with approved colour laminate. Solid flash door finished with prescribed shades of laminates as per design.attached with hinge and tower bolt.	9 sft.		
9	Full height Partition and Full Height Door:- Providing & fixing solid Full height Partition and 1 nos. flash door of 35mm. thick attached with frame and head finish with both side approved colour laminate. attached with hinge and Door Closer and Hasbolt and handle	35 sft.		
10	Supply of new 12mm etching glass with bank logo attached with column fitting work (public position) for ledger counter top side.	13 sft.		
11	Branch area column panelling work:- Providing & fixing hard wood framework will be clad with 12 mm thick BWR plywood finished with thick approved shed laminate as per design approved.	70 sft.		
12	Notice Board:- Supply of 1nos. Pin up Notice Board make with 12mm plyboard for branch cover with bank approve color in side foam filling.	1 nos.		
13	MAIN ENTRANCE DOOR WITH FIXED PARTLY GLAZING PARTITION FOR BRANCH: Providing and fixing in position of door shutter, fixed attached with aluminium bar partly made of 5mm thick float glass and A.C.P.partition board as per design. The rates shall include cost of door frame, hardware, bolt, locks, G channel bar, handles etc. The rates shall include vinyl sticker pasting work the Bank's logo and emblem on the glass in the size and design as prescribed by the Bank.	1 nos.		

**For and on behalf of
WEST BENGAL GRAMIN BANK**

**Regional Manager
Murshidabad Regional Office**





 For and on behalf of
WEST BENGAL GRAMIN BANK

Regional Manager
Murshidabad Regional Office 