

MURSHIDABAD REGIONAL OFFICE
48, NAYA SADAK ROAD
PO- BERHAMPORE
DIST-MURSHIDABAD Pin-742101
Email ID- rmmsd@wbgb.co.in

TENDER NOTICE NO: 08 /2026

Date: 22.05.2026

Notice inviting quotation/rate for wooden work for renovated premises of our Maheshili Branch

Sealed quotations are invited for seeking rates of the wooden furniture as per sketched map attached herewith on or before **06.06.2026**.

The interested firms/ vendors can either submit their quotation in person to Regional Office Murshidabad (at Letter Receive Section) on any working day during office hours or may send by post so that the same reaches this office within the stipulated date. The quotations will be opened at R.O. on **07.06.2026 at 12:00 Noon**. The interested firms/ vendors may be present during opening of such quotations.

Terms and conditions

1. Quotation Rate will be considered on Lower Rate basis. Materials are to be supplied with a sharing basis of 60:40 between L1 and L2 bidder, provided L2 bidder agrees to supply at the lowest quoted rate. In case of dissent from L2 bidder, Bank's decision will be final.
2. Rates are to be quoted as per sketch attached herewith
3. Firms must have GST registration number.
4. After expiry of the above time schedule no quotation will be accepted.
5. Bank reserves the right to accept or cancel bid unilaterally without assigning any reason thereof, prior to placement of supply order/signing of contract thereby incurring any liability to the affected bidder(s) or any obligation to inform the affected bidder(s) for the cause of banks action and no further correspondence will be entertained regarding the matter.
6. Supply of the articles is to be made in due time and any deviation/delay may attract penalty from original bill.
7. Selected vendor will have to finish the stipulated work in due time. Otherwise they will be debarred from getting order for their other selected items and/or their further participation in the tender process may be suspended.
10. The rate/s will be inclusive of delivery charges & others but exclusive GST.
11. Materials will be rejected if any defect/deviation in quality from specification is found as given in tender process.

Regional Manager



Tender Sheet

Work Of Mahesili Branch, Murshidabad

SL NO	DESCRIPTION	QUANTITY	RATE	AMOUNT
1	New L-type manager chamber of size 17'-0"x7'-0" made by hardwood frame , both side ply & sunmica setting, upper portion above 3'-0" height 06 mm 4'-0" etching glass setting, including two pc pallah setting complete fittings.	119 Sqft		
2	Alluminium main door of size 4'-0"x6'-0" made by alluminium bar, one pallah setting, pallah lower portion 3'-0" acp board & upper portion 3'-0" glass setting.	24 Sqft		
3	New L-type partition of size 8'-0"x4'-0" made by ply, both side sunmica setting, including one push gate setting.	32 Sqft		
4	Godrej door closer setting.	01 Pc		
5	Old notice board new velvet setting.	01 Pc		
6	Old ledzer table of size 13'-6"x3'-0" repairing, old sunmica damage & new sunmica setting, including upper portion 12 mm etching with logo glass setting.	01 Pc		
7	Old manager table 03 side portion & top portion old sunmica damage & new sunmica setting.	01 Pc		
8	Old file cabinet of size 3'-0"x3'-0" old sunmica damage & new sunmica setting.	01 Pc		
9	L-type Old table of size 10'-3"x2'-6" top & front Portion ply & sunmica setting, inside painting.	01 Pc		
10	Sunset Box cover of size 30'-0"x3'-0" made by ply , sunmica setting & back side painting, middle portion shelve setting, including 20 pcs pallah setting.	90 Sqft		
11	Trophy cabinet of size 7'-0"x3'-0" made by ply , complete sunmica setting & front side 04 pc glass shelve setting.	01 Pc		
12	Old steel almirah repairing & painting.	06 Pc		
13	All old wooden furniture repair & painting.	01 Job		
14	Vantiletor (15"x15") cover by acp board.	04 Pc		
15	New 5'-0"x3'-0" 08 mm glass supply & setting.	15 Sqft		
16	New partition of size 12'-2"x4'-0" made by hardwood frame , both side ply & sunmica setting, upper portion above 33" height 12 mm 15" etching with logo glass setting, including one pc setting complete fittings.	49 Sqft		
17	Kitchen room front portion new partition of size 8'-6"x3'-6" made by hardwood frame, ply setting, front side sunmica & back side paint, Including one door setting.	30 sqft		

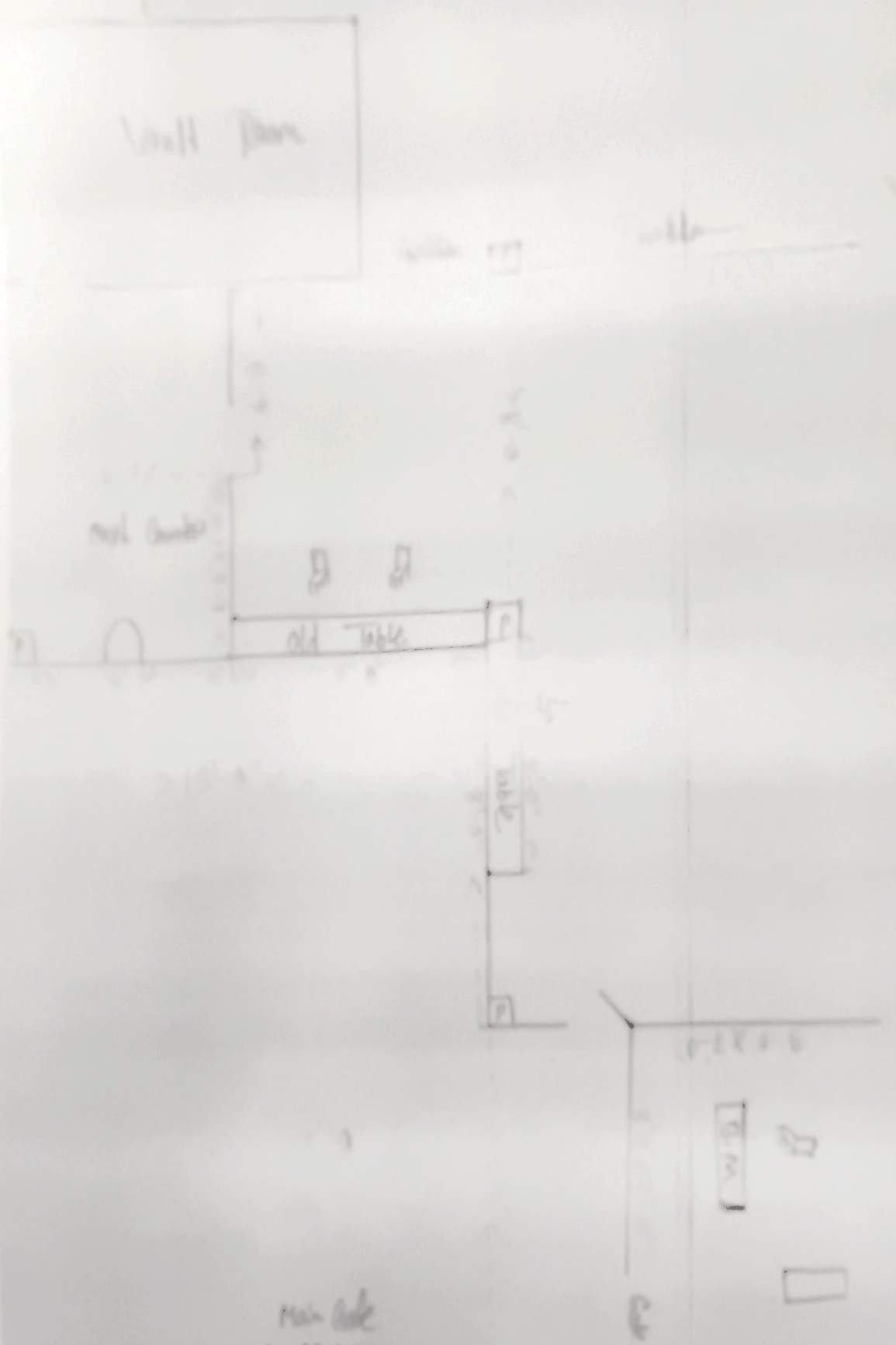
18

Cash counter of size 7'-6" x 6'-6" x 6'-0" made by hardwood frame, both side 12 mm ply & Sunmica setting, front portion above 3'-6" Height top portion marbel setting & 12 mm eaching with logo glass setting & 03 side 12 mm glass setting and back side 01 pc pallah With Lock setting, including 02 Pc channel setting drawer , lock, handle setting , upper portion open complete fitting & fixing.

01 Pc

--	--	--

Wall Pan



Handwritten text at the bottom center, possibly a signature or date.